

7168

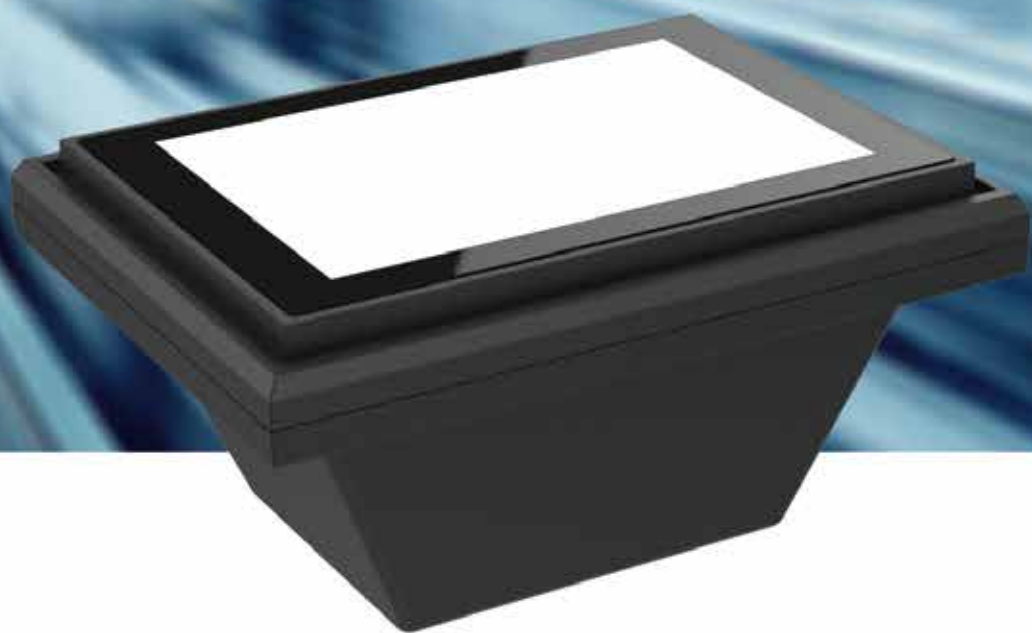
地铁闸机扫码支付应用

专业手机读码器

Professional Mobile Phone Reader

大视野

Large Field of View



应用场景：地铁闸机、停车场、展会闸机、景区进出口等。

Physical Characteristics	
尺寸Dimensions:	122mm x 89mm x 60mm
重量Weight:	210g
电压Voltage:	5 VDC
工作电流Working Current:	300mA
待机电流Standby Current:	100mA
峰值电流Peak Current:	350mA
Performance Characteristics	
传感器像素Image (Pixels):	640 pixels (H)x 480 pixels (V)
光源Light Source:	Illumination:6500K LED
视场角Field of View:	72° (H) x 57° (V)
旋转倾斜偏转Roll / Pitch / Yaw:	360°, ±65°, ±60°
打印对比度Print Contrast:	20% minimum reflective difference
接口支持Interfaces Supported:	USB, RS232
运动容差Motion Tolerance s:	>2m/s
Symbology Decode Capability	
一维条码/1-D:	UPC, EAN, Code 128, Code 39, Code 93, Code 11, Matrix 2 of 5, Codabar Interleaved 2 of 5, Mis Plessey, GSI DataBar, China Postal, Korean Postal , etc
二维条码/2-D:	PDF417, MicroPDF417, Data Matrix, Maxicode, QR Code, MicroQR, Aztec Hanxin, etc.
条码精度Minimum Resolution:	≥3.9 mil
User Environment	
工作温度Operating Temperature:	-30°C to 70°C
存储温度Storage Temperature:	-40°C to 85°C
湿度Humidity:	0% to 95% relative humidity,non-condensing
振动性Drop/Shock :	Withstands 10Gs 0.06" double amp
环境光免疫Ambient Light Immunity:	0-100,000 Lux.
Decode Ranges	
300字节 4cm X 4cm (QR)	0mm-110mm
450字节 4cm X 4cm (QR)	0mm-70mm
Performance may be impacted by bar code quality and environmental conditions	
